

Saturn is **BEYOND** the earth.

The satellite is **ABOVE** the earth.

The hot air balloon is **BELOW** the satellite.

### WHAT IS A PREPOSITION?

A preposition is a word or word set that relates a noun or a pronoun to another word in the sentence by giving information about direction, place or time. Common prepositions include:

across	around	inside	over
after	behind	into	under
among	beneath	near	with

# PREPOSITIONS



The climber is **ON** the mountain.



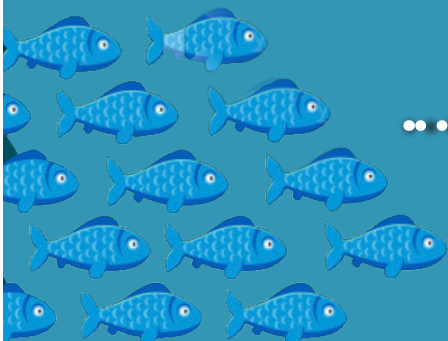
The house is **BETWEEN** the mountains and the bay.



The kids are playing **BY** the water's edge.



The sailboat is **IN** the water.



The fish are **UNDER** the water.